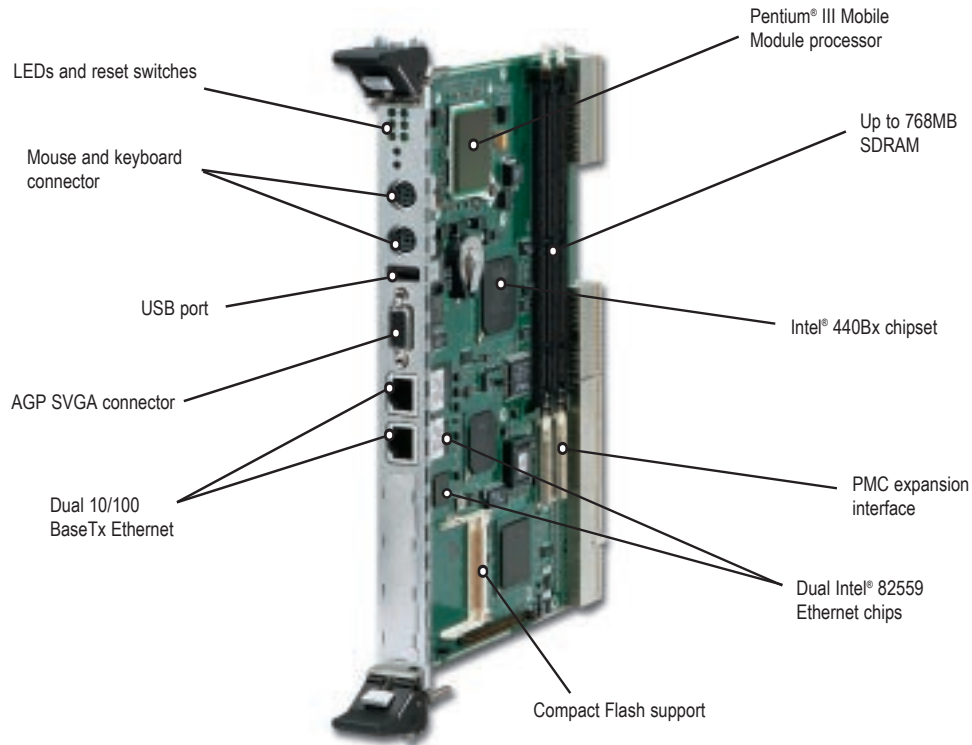


IBC 2602

Pentium III® Peripheral Master CPU Board



Ordering Information

IBC 2602-500

Mobile Pentium® III, 500MHz w/dual Ethernet, and SVGA

IBC 2602-600

Mobile Pentium® III, 600MHz w/dual Ethernet, and SVGA

IBC 2602-700

Mobile Pentium® III, 700MHz w/dual Ethernet, and SVGA

RIO

Rear I/O transition module w/dual Ethernet and SVGA

Memory Options

SDM-64MB	64MB RAM
SDM-128MB	128MB RAM
SDM-256MB	256MB RAM
SDM-512MB	Call

Flash Options

CF-32MB	32MB Compact Flash
CF-64MB	64MB Compact Flash
CF-128MB	128MB Compact Flash
CF-256MB	256MB Compact Flash

Specifications

Microprocessor

- Mobile Pentium® III Processors to 700 MHz

Chipset

- Intel® 440BX

Dynamic RAM

- Up to 512MB of Synchronous DRAM (ECC or non-ECC)

Flash Memory

- Up to 256MB Compact Flash

Cache

- Pentium® III Processors
- 256 Kbytes Integrated Full Speed L2 Cache on Mobile

Celeron™ Processors

- 128 Kbytes Integrated Full Speed L2 Cache on Mobile

BIOS

- Custom BIOS available

Watchdog Timer

- Software controlled with reset capability

Ethernet Interface (Dual)

- Dual 10/100BaseTx Ethernet Intel 82559
- Dual RJ-45 connectors and LEDs
- Available on Rear I/O

USB

- Single PC Compatible USB port

Video Interface

- 69030 AGP Video with 4MB Memory
- 1280 x 1024 x True Color non-interlaced

Enhanced IDE (Dual)

- Dual IDE Interface up to 4 drives
- Ultra DMA/33 with synchronous transfers up to 33MB/s

System Monitoring

- On-board system monitoring bus of voltages, temperatures

Standard I/O

- Floppy drive interface, up to 2 drives
- Dual 16C550 Serial Ports
- Bi-directional Parallel Port with EPP and ECP
- PS/2 Mouse Port
- PS/2 Keyboard Interface

Mechanicals

- 1-Slot (4HP) x 6U **CompactPCI™** Compliant
- **CompactPCI™** Compliant Rear I/O Board available

Operating Environment

- Single PC Compatible USB port
- Temperature: 0° - +50° C
- Storage: -40° - +85° C

Power Requirements

- 2.9A at +5.0 Volts (Typical)
- 2.1A at +3.3 Volts (Typical)
- 22 Watts (Typical)

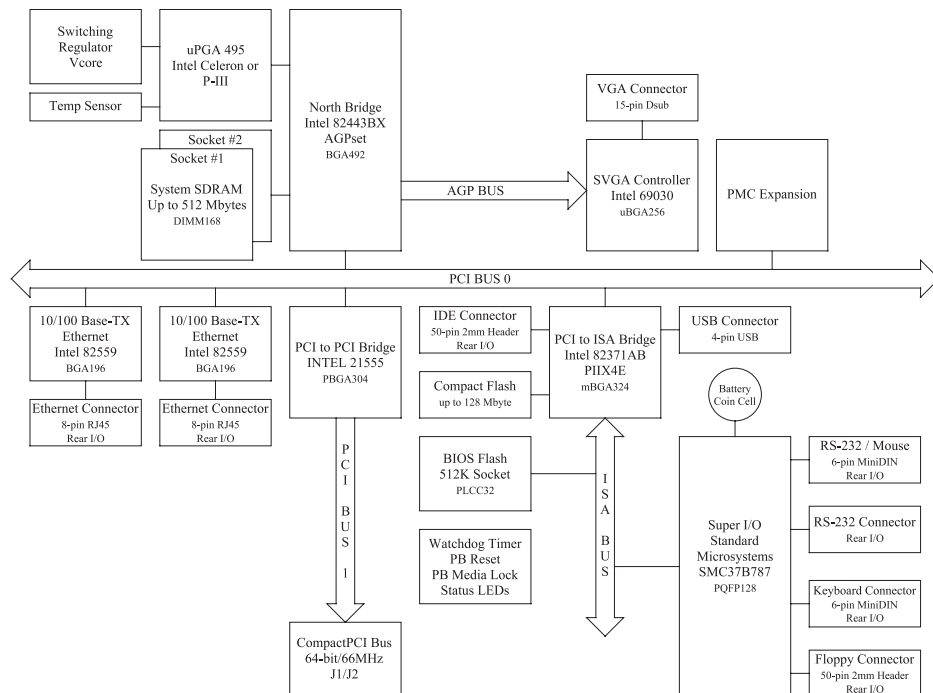


IBC 2602

Pentium III® Peripheral Master CPU Board

The computing core of the **IBC 2602** is based around the Intel mPGA socket processor family and the Intel® 440Bx chipset. The mPGA socket affords full scalability on the **IBC 2602** from a low cost Mobile Celeron to a high performance Mobile Pentium® III. This CPU meets and exceeds the demands of high performance servers in telecommunication and Internet applications. The low power of the mobile Pentium® III allows the IBC 2602 to fit in a single slot and consume significantly less power than standard desktop processors. An Intel® 21554 industry standard non-transparent bridge allows the **IBC 2602** to be used as a Peripheral Master. As a Peripheral Master, up to seven **IBC 2602**'s can reside in a **CompactPCI™** system.

The IBC 2602 offers a rich set of I/O and system peripherals including PMC, Compact Flash and 64-bit AGP video. The PMC expansion allows for additional I/O such as Ultra-SCSI or Fiber Channel technology support. With up to 128 Mbytes of CompactFlash and a field re-programmable BIOS in flash, boards may be configured without rotating media and still run disk-intensive applications such as Windows NT. For applications or development that require an IDE drive, the **IBC 2602** offers a mezzanine IDE board.



For Further Information



Worldwide Headquarters

I-Bus Corporation
 3350 Scott Blvd, Building 54
 Santa Clara, CA 95054
 United States
 Phone : +1 (408) 450-7880
 Fax : +1 (408) 450-7881
Toll Free: 877-777-IBUS
 Email: contact.us@ibus.com

European Headquarters

I-Bus UK Ltd
 Unit 6, Chichester Business Park
 City Fields Way, Tangmere
 West Sussex, PO20 2LB, UK
 Tel: +44 (0) 1243 756300
 Fax: +44 (0) 1243 756301
 Email: contact.uk@ibus.com

France, Italy

I-Bus France
 B.P 45 Valbonne
 06901 Sophia Antipolis CEDEX
 France
 Tel: +33 (0) 493 004 360
 Fax: +33 (0) 493 004 369
 Email: contact.fr@ibus.com